



# VH Armaturen GmbH

Ringstrasse 22 • D - 67245 Lamsheim  
Tel. 06233 / 512-0 • Fax 06233 / 512-110 • info@vh-armaturen.de

VH-Armaturen GmbH

## Data sheet

Seite 1 von 1  
Stand 03 2026

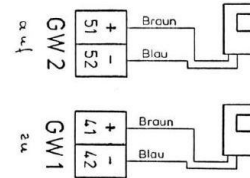
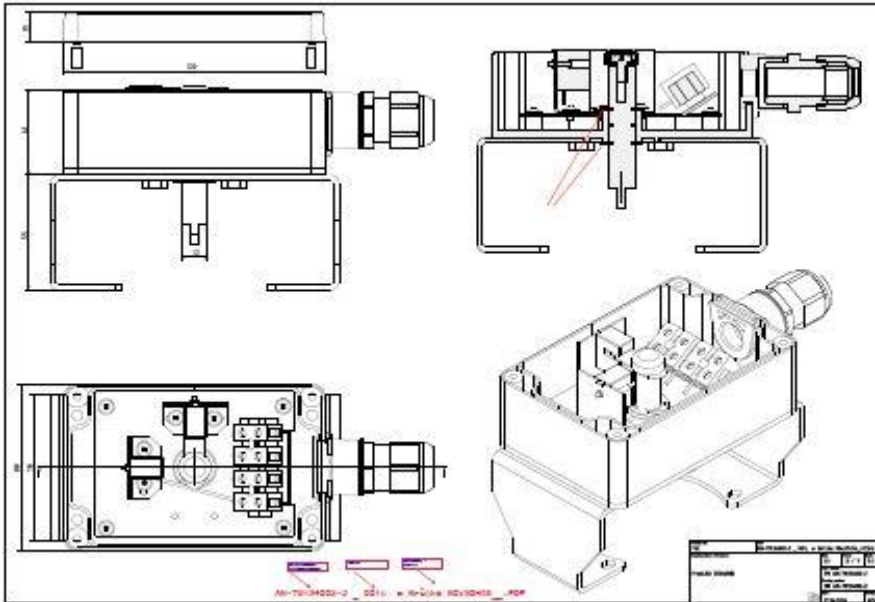
### Alu- Limit switch box

1

VH-Article: AN-A-2SC3,5N-O

ALU-Endschalterbox

2x Pepperl + Fuchs  
SC3,5-N0-BU



#### Description

- 2x slot sensors Pepperl+Fuchs type SC3,5-N0-BU
- Actuation via switching flag
- LED indicators on both slot sensors
- Connection via removable black cable gland M20×1.5 (for cable diameter: 5.5–13 mm)
- Removable screw terminals (cross-section up to max. 1.5 mm<sup>2</sup>)
- End position damped, travel path undamped

#### Housing

- Aluminum housing
- Without viewing window
- IP65
- Mounting interface according to ISO 5211 F05

#### Explosion Protection

Limit switch in type of protection "Intrinsic Safety" Ex ia IIC T6 according to EC Type Examination Certificate PTB 99 ATEX 2219 X

#### Maximum values

##### Signal processing and supply circuit

In intrinsic safety protection type Ex ia IIC/IIB  
or Ex ib IIC/IIB  
Only for connection to certified intrinsically safe circuits

Typ 1	Typ 2	Typ 3	Typ 4
U <sub>i</sub> = 16 V	U <sub>i</sub> = 16 V	U <sub>i</sub> = 16 V	U <sub>i</sub> = 16 V
I <sub>i</sub> = 25 mA	I <sub>i</sub> = 25 mA	I <sub>i</sub> = 52 mA	I <sub>i</sub> = 76 mA
P <sub>i</sub> = 34 mW	P <sub>i</sub> = 64 mW	P <sub>i</sub> = 169 mW	P <sub>i</sub> = 242 mW

The relationship between the type of connected circuit, the maximum permissible ambient temperature and the temperature class, as well as the effective internal reactances for each type of slot sensor, can be found in the following table:

Types	C <sub>i</sub> [nF]	L <sub>i</sub> [μH]	Maximum permissible ambient temperature in °C when used in temperature class											
			Type 1			Type 2			Type 3			Type 4		
			T6	T5	T4-T1	T6	T5	T4-T1	T6	T5	T4-T1	T6	T5	T4-T1
SC 3,5N0 BU	150	150	73	88	100	66	81	100	45	60	89	30	45	74