



# VH Armaturen GmbH

Ringstrasse 22 • D - 67245 Lamsheim  
Tel. 06233 / 512-0 • Fax 06233 / 512-110 • info@vh-armaturen.de

VH-Armaturen GmbH

## Data sheet

Seite 1 von 4  
Stand 03 2026

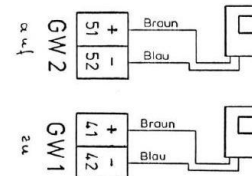
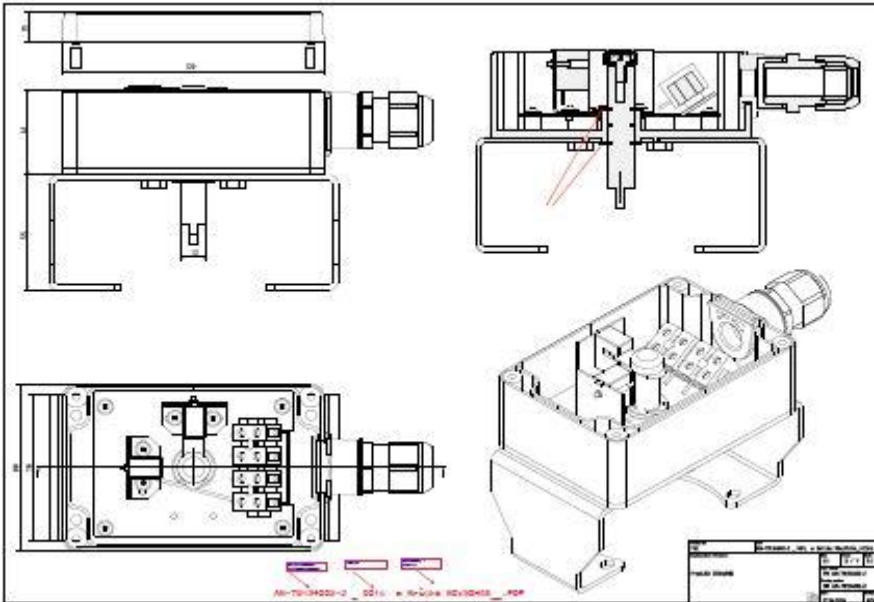
### Limit switch box

1

VH-article: AN-79134002

Limit switch box

2x Pepperl + Fuchs  
SC3,5-N0-BU



© VH Armaturen GmbH

#### Description

- 2x slot initiators Pepperl+Fuchs SC3,5-N0-BU
- Actuation via switching flag
- LEDs on both slot initiators
- Connection via a detachable black cable gland M20×1.5 (for cable diameter: 5.5–13 mm) with insert
- Removable screw terminals (cross-section up to max. 1.5 mm<sup>2</sup>)
- End position damped, travel path undamped

#### Housing

- Vestamid plastic housing, conductive
- With viewing window
- IP65
- Mounting interface according to ISO 5211 F05

#### Explosion Protection

Limit switch in type of protection "Intrinsic Safety" Ex ia IIC T6 according to EC Type Examination Certificate PTB 99 ATEX 2219 X

#### Maximum values

##### Signal processing and supply circuit

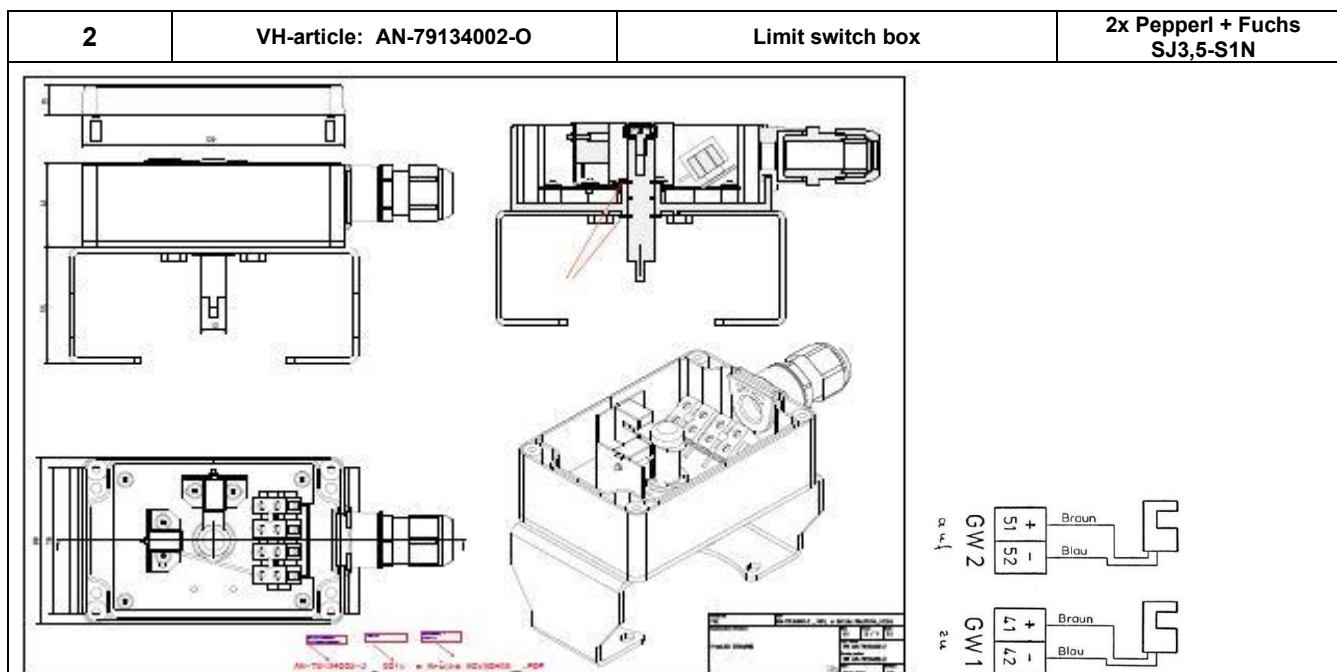
In type of protection intrinsic safety: Ex ia IIC/IIB  
or: Ex ib IIC/IIB

Only for connection to certified intrinsically safe circuits

Typ 1	Typ 2	Typ 3	Typ 4
U <sub>i</sub> = 16 V	U <sub>i</sub> = 16 V	U <sub>i</sub> = 16 V	U <sub>i</sub> = 16 V
I <sub>i</sub> = 25 mA	I <sub>i</sub> = 25 mA	I <sub>i</sub> = 52 mA	I <sub>i</sub> = 76 mA
P <sub>i</sub> = 34 mW	P <sub>i</sub> = 64 mW	P <sub>i</sub> = 169 mW	P <sub>i</sub> = 242 mW

The relationship between the type of connected circuit, the maximum permissible ambient temperature, and the temperature class, as well as the effective internal reactances for the individual types of slot initiators, can be found in the following table:

Types	C <sub>i</sub> [nF]	L <sub>i</sub> [μH]	Type 1		Type 2			Type 3			Type 4			
			Maximum permissible ambient temperature in °C when used in temperature class											
			T6	T5	T4-T1	T6	T5	T4-T1	T6	T5	T4-T1	T6	T5	T4-T1
SC 3,5N0 BU	150	150	73	88	100	66	81	100	45	60	89	30	45	74



**Description**

- 2x slot initiators Pepperl+Fuchs type: SJ3,5-S1N
- Actuation via switching flag
- LEDs on both slot initiators
- Connection via a removable black cable gland M20x1.5 (for cable diameter: 5.5–13 mm)
- Removable screw terminals (cross-section up to max. 1.5 mm<sup>2</sup>)
- End position damped, travel path undamped.

**Housing**

- Vestamid conductive plastic housing
- With viewing window
- IP65
- Mounting interface according to ISO 5211 F05

**Explosion Protection**

Limit switch in type of protection intrinsic safety Ex ia IIC T6..T1 Ga in accordance with EC type-examination certificate PTB 00 ATEX 2049 X

**Maximum Values**

**Signal processing and supply circuit**

In type of protection intrinsic safety: Ex ia IIC/IIB  
or: Ex ib IIC/IIB  
Only for connection to certified intrinsically safe circuits

Typ 1	Typ 2	Typ 3	Typ 4
U <sub>i</sub> = 16 V	U <sub>i</sub> = 16 V	U <sub>i</sub> = 16 V	U <sub>i</sub> = 16 V
I <sub>i</sub> = 25 mA	I <sub>i</sub> = 25 mA	I <sub>i</sub> = 52 mA	I <sub>i</sub> = 76 mA
P <sub>i</sub> = 34 mW	P <sub>i</sub> = 64 mW	P <sub>i</sub> = 169 mW	P <sub>i</sub> = 242 mW

The relationship between the type of the connected circuit, the maximum permissible ambient temperature, and the temperature class, as well as the effective internal reactances for each type of slot initiator, can be found in the following table:

			Type 1			Type 2			Type 3			Type 4		
Types	C <sub>i</sub> [nF]	L <sub>i</sub> [µH]	Maximum permissible ambient temperature in °C when used in temperature class											
			T6	T5	T4-T1	T6	T5	T4-T1	T6	T5	T4-T1	T6	T5	T4-T1
SJ 3,5 S1N	150	150	73	88	100	66	81	100	45	60	89	30	45	74



<b>4</b>	<b>VH-article: AN-79134004-O</b>	<b>Limit switch box</b>	<b>4x Pepperl + Fuchs SC3,5-N0</b>
----------	----------------------------------	-------------------------	--



**Description**

- 4x slot sensors Pepperl+Fuchs type SC3,5-N0-BU
- Actuation via double switching flag
- LED indicators on all 4 slot sensors
- Connection via removable black cable glands M20×1.5 (for cable diameter: 5.5–13 mm)
- Removable screw terminals (cross-section up to max. 1.5 mm<sup>2</sup>)
- End position damped, travel path undamped.

**Housing**

- Vestamid plastic housing
- With viewing window
- IP65 (version without viewing window: IP67)
- Mounting interface according to ISO 5211 F05

**Explosion Protection**

Limit switch in "intrinsic safety" explosion protection type Ex ia IIC T6 according to EC type-examination certificate PTB 99 ATEX 2219 X

**Maximum Values**

**Signal processing and supply circuit**

In intrinsic safety protection type Ex ia IIC/IIB or Ex ib IIC/IIB  
Only for connection to certified intrinsically safe circuits

Typ 1	Typ 2	Typ 3	Typ 4
U <sub>i</sub> = 16 V	U <sub>i</sub> = 16 V	U <sub>i</sub> = 16 V	U <sub>i</sub> = 16 V
I <sub>i</sub> = 25 mA	I <sub>i</sub> = 25 mA	I <sub>i</sub> = 52 mA	I <sub>i</sub> = 76 mA
P <sub>i</sub> = 34 mW	P <sub>i</sub> = 64 mW	P <sub>i</sub> = 169 mW	P <sub>i</sub> = 242 mW

The relationship between the type of connected circuit, the maximum permissible ambient temperature and the temperature class, as well as the effective internal reactances for each type of slot sensor, can be found in the following table:

Types	C <sub>i</sub> [nF]	L <sub>i</sub> [μH]	Maximum permissible ambient temperature in °C when used in temperature class											
			Typ 1			Typ 2			Typ 3			Typ 4 (not specified)		
			T6	T5	T4-T1	T6	T5	T4-T1	T6	T5	T4-T1	T6	T5	T4-T1
SC 3,5N0 BU	150	150	60	75	100	60	75	100	60	75	95	-	-	-